

Seminar Description

The Integrated Play Groups (IPG) and Friend 2 Friend (F2F) models come together in this two-day seminar to address the unique social, play and friendship needs of children with autism spectrum disorders (ASD) and related social communication needs. These complementary models draw upon state-of-the-art evidence-based practices to foster children's peer play and friendships within inclusive school, home and community settings. This seminar uses interactive games, video, slides, art, stories and real-life experiences to illustrate the program models.

Day 1 will provide the conceptual foundation for the IPG and F2F models and introduce the steps for designing effective and meaningful peer play and friendship programs.

Day 2 will focus on tools and techniques for implementing the practices of the IPG and F2F models to support children's social interaction, communication, play, imagination and friendships across settings.

Join us to discover...

- ✚ The importance of play and friendships in childhood
- ✚ The nature of play and friendships in children with ASD
- ✚ The principles and practices of the Integrated Play Groups Model
- ✚ The principles and practices of the Friend 2 Friend Model
- ✚ How to assess and monitor children's social, communication, play, imagination and friendship development
- ✚ How to enhance social interaction, communication, play, imagination and friendships
- ✚ How to design quality peer play and friendship programs in school, home, community and therapy settings
- ✚ How to design quality programs and activities to support peer play and friendships

About the Models



The **Integrated Play Groups (IPG)** model is designed to support children of diverse ages and abilities on the autism spectrum (novice players) in play with typical peers and siblings (expert players), in school, home and community settings. Through an individualized system of support, emphasis is placed on maximizing each child's developmental potential and intrinsic desire to play, socialize and form meaningful peer relationships.



The **Friend 2 Friend (F2F)** model is designed to foster mutual friendships for children with ASD by building awareness, empathy and understanding in their peers, siblings and classmates. F2F offers innovative educational programs that include Puppet presentations and Simulation-Games. Presented in an age-appropriate and sensitive manner, F2F demystifies autism by modeling, labeling, explaining and normalizing characteristics as well as teaches specific friendship skills.



Registration Form (registration begins Jan 2008)

Name & Organization:

Address:

City/Province/State

Postal/Zip Code

Phone #:

Email:

Credit Card Number: Mastercard / Visa (circle)

Credit Card Expiry Date:

Early Bird Registration (Jan 1, 2008 – May31, 2008)

	Early Registration	Registration
Parent/Para /student	\$225	\$275
Professional	\$275	\$ 325
Group Rate (8 or more)	\$225	\$275

*** includes: refreshment breaks/ Lunch on own***

Payments: Registration will be accepted by phone, fax, mail, or e-mail. Payment can be made by Cash, Cheque, or Credit Card (Visa or Mastercard.)

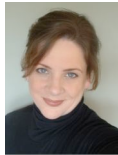
Autism Calgary Association
174, 3359 27th Street NE
Calgary, Alberta, T1Y 5E4
Phone: (403) 250-5033
Fax: (403) 250-2625

Cancellation Policy: An administration charge of \$50.00 will be charged for all cancellations up to 30 days before the conference. No Refunds Will Be Granted After That Time.

About the Speakers



Pamela Wolfberg, Ph.D. is a special education professor at San Francisco State University and director of the **Autism Institute on Peer Relations and Play**. As creator of the IPG model, she is an internationally renowned autism expert. She is the recipient of several distinguished awards for her scholarship, research and practice. She is widely published and the author of *Play and Imagination in Children with Autism* and *Peer Play and the Autism Spectrum: The Art of Guiding Children's Socialization and Imagination*.



Heather McCracken is the founder and executive director of the **Friend 2 Friend Social Learning Society** in Vancouver, British Columbia and a mother of three children, one with ASD. As creator of the F2F model, she is a sought after international speaker. She actively delivers programs to children in schools and community groups as well lectures at the University of B.C., San Francisco State University and other post-secondary institutions. She has numerous publications and is the author of *That's What's Different About Me: Helping Children Understand Autism Spectrum Disorder*.

About Autism Calgary Association



The **Autism Calgary Association** is proud to offer the **Friend 2 Friend Programs**. As a F2F satellite our team has been delivering Puppet and Simulation Game Presentations to children in Southern Alberta since October of 2006.

Our Mission:

SUPPORT: Bring hope and help meet the needs of families and individuals living with Autism Spectrum Disorders.

SPEAK: Be the official voice of the ASD community in Calgary and area.

EDUCATE: Increase understanding among the ASD community, allied professionals, policy-makers and the general public

ADVOCATE: Secure and defend the best quality of life for those with ASD throughout their lifespan and their families

PROMOTE: Encourage the advancement of meaningful research and the development of effective treatments options

For more information about our other exciting programs and initiatives visit our website at www.autismcalgary.com

**Autism Calgary Association
&
Friend 2 Friend Social Learning Society**
Proudly host

Fostering Peer Play and Friendships in Children on the Autism Spectrum

Blending the Integrated Play Groups and Friend 2 Friend Models



**Presented by
Pamela Wolfberg & Heather McCracken**

Oct 17th and 18th, 2008
Executive Royal Inn Hotel & Conference Centre Calgary, Alberta
2828 – 23rd Street NE
Calgary, Alberta
Canada T2E 8T4